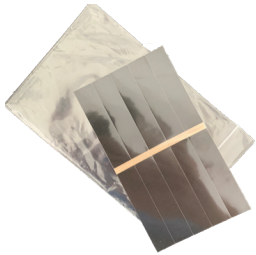


Using The ActiveSense[®] system AIR1 Sensor in Multi-catch Traps

ITEMS NEEDED



AIR1 SENSOR



DOUBLE-SIDED TAPE
(PROVIDED)



ALCOHOL WIPES



PAINT BRUSH

STEPS

1.

REMOVE DEBRIS

Remove any debris in trap with paint brush.



2.

CLEAN

Clean floor of trap where the sensor will be attached with alcohol wipe, allowing time for surface to dry.



3.

TAPE

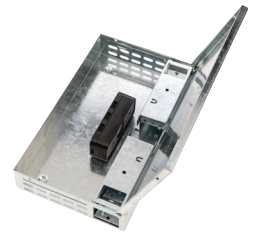
Attach double-sided tape to bottom of AIR1 sensor. Use either the tape provide with AIR1 sensor or other quality alternative.



4.

ATTACH SENSOR

Attach AIR1 sensor to interior front wall center of trap with label facing up. Ensure the sensor lens is facing back towards the entrance of trap.



For use in multi-catch traps.

When installing, use the MCT WALL setting.

This installation setting is not approved for glue boards.

If using glue boards, see the How To Guide for Multi-Catch Traps with Glue Boards.